

2021

Nepal



Natural Beauty Of The Himalayas,
Jungles Of Chitwan And Bardia,
Adventure Activities, Spirituality And Good Karma





We at Navyush Travel Experiences strive to show a destination and its offerings in all its vibrant colors and themes including its pristine and earthy elegance to build an inner connection with the traveler. We have created a special travelogue for destination 'Nepal' that appeals to all segments of travelers. While trekkers and mountaineers are the largest tourist group to visit Nepal, the mountain kingdom that is home to the tallest mountains in the world, a culturally immersive visit to explore Nepal's heritage and spiritual sites is equally attractive. Travel to Nepal inspires from within yet unites you with the world at large. The wide range of adventure activities like paragliding, ultralight flight experience, mountain biking and bungee jumping in Pokhara or rock climbing on Nagarjuna and Khumbu mountain or white water rafting in Trishuli River or Zip Lining in Dhulikhel are only some of the many experiences that Nepal offers to travelers. Nepal is also an ideal Wedding Destination because of its mystical nature and scenic beauty. The upgraded MICE facilities in Kathmandu, Chitwan, Lumbini, Pokhara, Biratnagar, Janakpur and Jomsom in Lower Mustang make Nepal a friendly and secure destination with a wide range of modern hotels, convention centers, and conference facilities. Nepal is also a gastronomical delight for food lovers who can choose from a variety of cuisines from Khas to Himalayan to Tibetan influenced to Newari to Terai. Besides sightseeing/excursion programs, adventure activities, exciting mountain flights, entertainment and shopping, Nepal has something to offer to each traveler. Just as conscious travel is gradually establishing itself as a viable option, travel to an eco-friendly resort and engaging with local farmers to produce and promote organic food provides an opportunity to tourists to uplift local communities while on vacation or traveling on work. We at Navyush Travel Experiences have made an effort to combine 'Nepal's' natural beauty with the incredible experiences it has to offer.

Puneet Saxena (Founder)
Navyush Travel Experiences Pvt.Ltd



📞 9958426600

✉ puneet.saxena@navyush.com





nepal



nepal awaits



Dr. Dhananjay Regmi
Chief Executive Officer
Nepal Tourism Board

Nepal is the holy land of Pashupatinath and Muktinath, birth place of Lord Buddha and Goddess Sita, home of Mt. Everest and other eight thousand meter peaks. With its rich cultures at the backdrop of the most dramatic scenery in the world, Nepal offers numerous opportunities for discovery and unique experiences. For many, Nepal's greatest attractions are its people, ethnic diversity and languages. From remote mountain villages to medieval hill-towns and the ancient cities of the Kathmandu Valley, the people of Nepal are always welcoming. Come and relish great taste of Nepalese cuisine prepared with love and culinary arts and celebrate different festivals.

After a gap of one whole year, Nepal is pleased to once again come to India to invite and welcome our beloved neighbors. SATTE has been a very important fair for Nepal's Tourism Industry not only to showcase our destination but also to update communication, create new contacts and build stronger networks between/among the Nepalese, Indian and International counterparts. As in the previous years, Nepalese travel trade companies are participating in SATTE 2021 despite the pandemic challenges to promote and showcase Nepal's rich tourism products and activities in the Indian market.

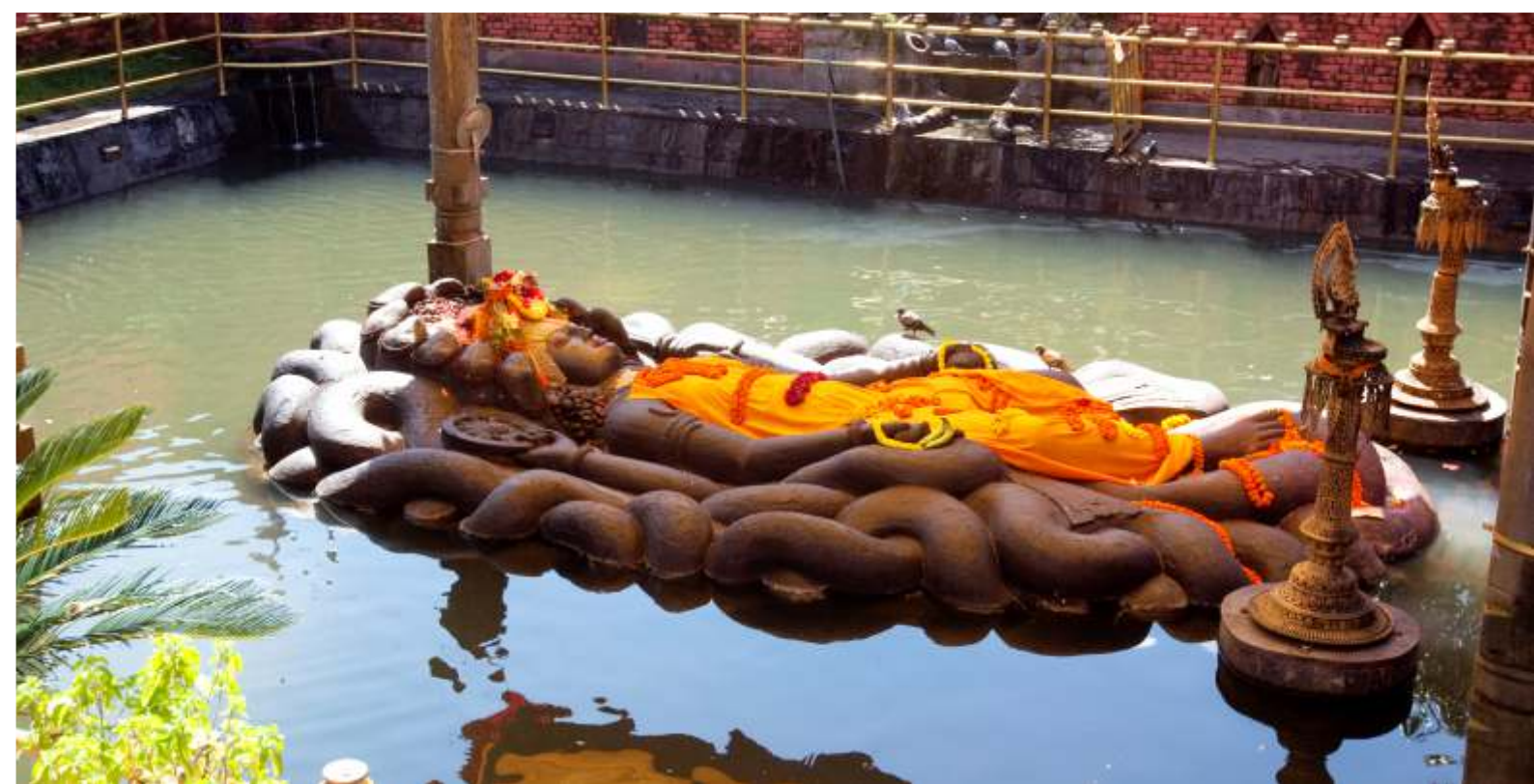
With smooth air and land connectivity between the two great neighbors, Nepalese are all set to welcome our valued Indian visitors with all required safety preparedness. In this global pandemic, Nepal has adopted and executed COVID-19 safety protocol at all tourism products and services and has placed the biggest priority on health care and health security. We look forward to receiving our valued guests in the near future.

Nepal Awaits to welcome you all.









Glimpses of nepal



KATHMANDU

Kathmandu is known as the city of ancient temples, shrines and monuments. This beautiful capital of Nepal is a valley surrounded by mighty mountain ranges and has several historically significant sites, including UNESCO world heritage sites that one can visit. The city also provides ample opportunities for high end adventure activities. Kathmandu was the royal capital of the Kingdom of Nepal and hosts palaces, mansions and gardens. Some of the best activities to indulge in include hiking and exploring temples, heritage sites and peaks. The city also has a culture of fantastic range of cuisine from all across the world, besides the traditional Nepali cuisine which is diverse in its own way. The city thus is a haven for an ideal break from the rigours of a hectic life.

BHAKTAPUR

Bhaktapur- the city of temples – is known for the best-preserved palace courtyards and the unique pagoda style temple architecture that dominates the city skyline. Here traditions have remained intact with locals continuing to celebrate several centuries old festivals in the city squares. This beautiful city is listed as a UNESCO world heritage site for its rich culture, temples, wood carvings and metal and stone work, which date back to the 12th century. This is a perfect destination for those who are interested in Nepali culture and heritage.

NAGARKOT

Nagarkot provides a refreshing environment with scenic beauty and divine peace far from the crowded hustle and bustle of Kathmandu city. It is the nearest point from Kathmandu valley from where one can see several ranges of snow capped mountains, including Mount Everest, on a clear day. It serves as a connecting point for Helambu and Lang-tang trekking. Nagarkot has several options for smaller and comfortable treks. The lush green surroundings of the city with the high mountains in the backdrop makes the city an ideal place for relaxation.



POKHRA

Pokhara is a major tourist destination in Nepal - also called the garden city of 8 lakes. It is surrounded by mountains and is the starting point to several trekking routes to the higher ranges, including to the Annapurna region. It is also famous for boating, rafting and adventure sports such as canoeing, paragliding and bungee jumping.

The city is also known as a relaxation destination as one can walk along the beautiful Phewa lake and enjoy the great music and action that engulfs this small city after sun set. One can surrender oneself to some of the finest meals at the several quaint cafes and chic restaurants with soul soothing music and entertainment. The view of the Annapurna ranges and Mount Fishtail from different parts of the city is indeed breathtaking. Pokhara is also known for its waterfalls and gorges besides mystical caves and historical museums. The city has a distinct identity that makes it special from any other cities of Nepal.

CHITWAN

Chitwan is famous in Nepal for mustard cultivation and production of mustard oil. Being in the plains, Chitwan provides a different set of attractions with a mix of forest adventure, jeep safari, jungle walk, bird watching and visits to elephant breeding centre and vulture and gharial conservation area. One of the main attractions of the place is elephant ride and exploring the community forest. With a number of ethnic groups living in the area one is able to experience the unique flavour of lifestyle, music, art and culture of ethnic groups such as the Tharus, Bate and Majhi. One can also experience the sunset while canoeing along the Rapti river here.



LUMBINI

Lumbini is one of the most famous Buddhist pilgrimage sites in Nepal and is recognized as the place where Siddhartha Gautama was born. It is a UNESCO World Heritage Site. Lumbini has large number of temples and monasteries some of which have been funded by different countries. One of the attractions in Lumbini is the Puskarini, or the holy pond, where Buddha's mother took the ritual dip prior to his birth. This is one of the best places to try meditation and to enable this there are several meditation centers run by monks. Large number of committed tourists from different parts of the world travel here for long periods of stay for meditation. Another major attraction of Lumbini is the Maya Devi Temple which has the famous Ashoka Pillar. Walking through the streets of the city, especially the temple complex, one gets drifted to the spiritual essence of Buddhism.

PHARPING

Pharping is a Newari town located not far from Kathmandu known for its ancient Buddhist pilgrimage sites. The city is a cultural hub in itself and provides opportunities for some of the most beautiful hiking trails. Several Buddhist pilgrimage sites as well as a number of Buddhist monasteries and meditation retreat centres are located here. The city is also home to the famous Dakshinkali Temple, one of Nepal's most important Hindu Temples dedicated to Goddess Kali. Pharping also houses Nepal's oldest hydroelectric power station, which serves as a living museum. It can be a hub for several unexplored hikes around Kathmandu Valley.

JOMSOM

Jomsom is a beautiful town in Mustang in western Nepal, and is located on the way to the famous Vishnu temple at Muktinath. It serves as the main gateway to Upper Mustang and forms the base for some of the most arduous treks into the Annapurna circuit. The soaring peaks of Dhaulagiri and Nilgiri form the backdrop with the Kali Gandaki river flowing through the centre of the city. The Gandaki river is also famously known for the black fossilised stone called Shaligram, associated with god Vishnu.

Some of the villages around Jomsom are known for their Tibetan settlements and provide a unique insight to Tibetan culture and tradition. These quaint and well preserved villages are special in their own way and one can spend hours absorbing the unique characteristics of these villages

PATAN (LALITPUR)

The city of Lalitpur symbolises the epitome of ancient culture, tradition and art retained in their pristine originality over the years. Besides the unique fine metalwork that the city is famous for, it has managed to retain shades of ancient building architecture that prevailed in Nepal centuries ago. Patan Durbar square in the heart of the city is one of the three Durbar squares in Kathmandu Valley. It houses the ancient royal Palace, which was once home to the Malla Kings of Lalitpur.

LAMATAR

Lamatar, a traditional Newari village, is located in Kathmandu valley's south-eastern foothills and can be reached after approximately 20-kilometer of pleasant drive from Kathmandu. It is surrounded by thick flora marked by beautiful green woods covering the mountains around. Inhabitants of Lamatar have been using forest resources such as grass, wood, fodder and pastures within the realm of community forest.

DHULIKHEL

Dhulikhel was part of an important trade route to Tibet in the old days. Given the city's beautiful natural surroundings, tourists usually stay here to undertake some of the most exciting hikes through a wide range of trails with some of the most breathtaking views. The sun rise and sun set are indeed mesmerising from Dhulikhel. The snow-clad mountains seen from here are panoramic. One of the activities one can indulge in here is bird and butterfly watching from several designated spots. One can spot more than 70 plus species at this location. As part of adventure sports, a new zip line facility is available which has been attracting large number of tourists. The city also provides opportunity for mountain biking



CHANDRAGIRI HILL CABLE CAR

A visit to Chandragiri Hill

The fascinating experience of 2.5 Km Cable car ride to reach the Chandragiri Hilltop in just 09 minutes.

At the top- gets you a breathtaking view of Mt.Everest! and darshan at Bhaleshwor Mahadev temple!

It also has a great dining option at Café Fountain & Bar@2520 and a children playground area

One also has an option to stay at the top at Chandragiri Resort to wake up to the 360 views of the mountain!

A worth visit which will convince you SEEING IS BELIEVING



SIGHTSEEINGS / ACTIVITIES



KATHMANDU

Pashupatinath Temple – Pashupatinath Temple is situated on the banks of the Bagmati River in Kathmandu. The temple is a sacred temple for Hindus and for the locals of Nepal. Pashupatinath is dedicated to Lord Shiva and is categorized under the UNESCO World Heritage Site.

Swoyambhunath Temple – Swoyambhunath Temple is situated on a hilltop in Kathmandu. It is designated as UNESCO World Heritage Site. Swoyambhunath Stupa is Nepal's oldest stupa, with several shrines and monasteries on its premises. Since large number of monkeys reside in the temple premises, it is also known as the Monkey Temple.

Kathmandu Durbar Square – Kathmandu Darbar Square is a famous attraction in Kathmandu, also known as Hanuman Dhoka Durbar Square dedicated to Lord Hanuman. It is a UNESCO World Heritage Site. It is a popular attraction as it was the old palace of the former kingdom or a royal palace for Shah and Malla Kings. The Kumari Ghar is situated Kumari Chowk in the Kathmandu Durbar square, Kumari Ghar is a temple dedicated to Living Goddess.

Boudhanath Stupa – Boudhanath Stupa is located on the outskirts of Kathmandu. This stupa is the largest stupa of Kathmandu valley. Boudhanath Stupa is a UNESCO World Heritage site.

Mountain Flights-The mountain flight is an exhilarating experience as the aircraft takes you high into the mountains north of Kathmandu for a panoramic view of Himalayas. During the flight one can not only see Mt. Everest but other Mountains like Gosithan, Choba-Bhamre, Phurbi- Ghyachu, Chugimago, Gyanchungkang surrounding the highest spot-on earth.

BHAKTAPUR

Bhaktapur Durbar square – The Bhaktapur Durbar square one of the valley's most charming architectural showpieces highlighting Nepal's ancient arts of Nepal. It is a UNESCO World Heritage site that consists of many monuments, temples, and architecture. It was also the former Kingdom of Bhaktapur's royal palace. The square's attractions include temples such as Mini Pashupatinath, Badrinath, Gopi Nath, and Lions Gate.

NAGARKOT

Nagarkot Panoramic Hiking Trail – These are easy hiking trails for tourists who are fond of trekking or hiking. These trails let you experience the best sunrise and the sunset of Nepal according to the weather.

Nagarkot Everest view paragliding – Paragliding in Nagarkot gives tourists an excellent view of Mt. Everest.



POKHARA

Bindhyabasini temple - The Bindhyabasini temple is the oldest temple of Pokhara. The temple is dedicated to Goddess Bindhyabasini, an incarnation of Kali

Tal Barahi Temple – It is located on a small island in Phewa Lake. Also known as the Lake Temple, a boat is needed from the lake to reach the temple. The temple is dedicated to Goddess Durga.

Gupteshwor Mahadev cave-The cave is the longest cave in Nepal. The cave has different shrines dedicated to different deities. The largest shrine is dedicated to Lord Shiva.

Seti Gorge – The Seti River is famous as it is a Milky white river in appearance and passes through Pokhara. This river creates deep gorge across the Pokhara Valley and can be seen through the Gurkha Museum.

Phewa Lake – also known as Fewa Lake or Phewa Tal. It is a freshwater lake and is the most visited lake of Nepal. Tal Barahi temple is located in the lake. The lake is famous for boating.

Tal Barahi temple is located in the lake. The lake is famous for boating.

Adventure activities – Ultralight flight experience, paragliding, mountain biking, Bungee jumping, Zip lining

CHITWAN

Chitwan National Park- Chitwan National Park was the first National park of Nepal and also a UNESCO world heritage site. Bengal tiger, Indian leopards, sloth bears, rhinoceros are some endangered species found in the park. The park is also famous for jungle safari known as the Chitwan Jungle Safari.

Ethnic Cultural tour - The largest ethnic group in Chitwan is the Tharus, who have their own culture. They have a diverse cultural heritage.

LUMBINI

World Peace Pagoda- The massive World Peace Pagoda is intended to serve as a symbol of humanity's desire for peace.

Maya Devi Temple – Maya Devi Temple is a UNESCO world heritage site and is the main temple of Lumbini. It is the birthplace of Gautama Buddha.



KATHMANDU

Skeletal Itinerary

Day 1	Arrival in Kathmandu. Transfer to hotel. Visit Pashupatinath Temple for Aarti
Day 2	Sightseeing tour of Kathmandu
Day 3	Departure

Overview

Nepal is the place to go if you enjoy visiting places known for their natural beauty, panoramic views, and temples. For you, Kathmandu is the ideal tourist destination. The city of temples is another name for it. When you visit the local areas, you will be introduced to its rich culture and rituals. You can also take an amazing mountain flight known as the "Everest Experience."

Suggested Programme

Day 01: Arrival Kathmandu

You will be warmly welcomed by our representatives at Tribhuvan airport and driven to the hotel. Check-in hotel and take some rest then according to arrival schedule, driven to **Pashupatinath Temple**, world heritage site dedicated to Lord Shiva. Enjoy the evening Aarti held on Pashupatinath along with appreciating the artistic beauty of Pashupatinath. And drive to the hotel for overnight at Kathmandu.

Day 02: Kathmandu

Breakfast at the hotel. After breakfast drive to **Swoyambhunath**, a world heritage site famed as monkey temple is nestled on the top of the hill offering the breathtaking vision of the complete Kathmandu valley, then descend from the temple stepping on 365 stone steps. Then drive to another World heritage site **Kathmandu Durbar Square** named as Basantpur durbar square; a historical site that embraces palaces and courtyards of old Malla and Shah Kings dates back from 14 to 15 centuries onwards. And also visit **Kumari Ghar**; the house of the living goddess Kumari.

Then finally drive to another destination **Boudhanath** famed as little Tibet. Biggest stupa of Nepal is also a hub for meditation and also pilgrimage sites for Buddhists and other visitors also. And can witness the excellent views of the mountains from the top of the roofs of the restaurants nestled at Boudhanath. Overnight stay at Kathmandu.



Day 03: Departure

We will drive you to airport for departure on the basis of your scheduled flight.

Highlights

- Visit to Pashupatinath Temple
- Visit to Swoyambhunath Temple
- Visit to Kathmandu Durbar Square
- Visit Kumari Ghar
- Visit Boudhanath Stupa





The Everest Hotel
KATHMANDU



Renowned among the best hotels in the city, The Everest Hotel is located 2.6 Kms from Tribhuvan International Airport, near the International Convention Centre and conveniently established at a place surrounded by tourist hotspots, shopping centre and Pashupatinath Temple.

Accommodation

Wonderful views of the surrounding mountains are best admired from the hotel's 160 spacious and brightly naturally lit rooms including 6 suites and 2 Executive Suites with comfortable beds in a luxury setting, making your stay distinctly delightful.

CATEGORIES

	Size (m ² /ft ²)
Superior Room - King & Twin	30 / 323
Deluxe Room - King & Twin	30 / 323
Club Suite - King & Twin	30 / 323
Suite Room	45 / 323
Executive Suite	45 / 323

ROOM FACILITIES

Includes:
Pool/Health Club, In-House Laundry, Free Wi-Fi, LED TV, Electronic Safe, MultiMobile Charger, Bluetooth Speaker, Alarm and Mini Bar

Food & Beverage Outlets








The Everest Hotel is pleased to offer our guests a wide range of facilities from dining to lounging, we have everything to make your perfect getaway memorable.

The Café - All Day Dining Restaurant
Mandarin - The Pan Asian Restaurant
Sidewalk - The Pastry Shop
The Lobby Bar
Bugles & Tigers Bar - The Gurkha Bar at Rooftop
In-Room Service (24 hrs)

Meeting & Events

Elegant and spacious, Grande Ballroom along with our meeting rooms- Ruby, Emerald and Sapphire, cater as an ideal venue for conferences, seminars, workshops, engagements, weddings and receptions.

CAPACITY CHART

VENUE	LEVEL	CEILING HEIGHT IN FEET	LENGTH X BREADTH IN FEET	AREA IN SQUARE FEET							
THE GRANDE BALLROOM	LOBBY	12	110x58	6400	128	120	850	550	340	1000	380
BALLROOM - 1	LOBBY	12	58x55	3200	64	60	350	225	150	400	150
BALLROOM - 2	LOBBY	12	58x55	3200	64	60	350	225	150	400	150
PRE FUNCTION AREA	LOBBY			5000							
BANQUET LAWN	LOBBY			5500							
RUBY	7th FLOOR	8	27x16.5	445		15					
EMERALD	7th FLOOR	8	62x13	800		40					
SAPPHIRE	7th FLOOR	8	27x23	621		40					
FAR PAVILLION + PATIO	7th FLOOR	10		4400						150	



The Banquets

THE BANQUETS FOR:-

- 1) Engagements & Wedding
- 2) Conferences
- 3) Meetings and Workshops
- 4) Parties
- 5) Theme Parties
- 6) Exhibitions
- 7) Fashion Shows



The Grande Ballroom

THE BALLROOM FOR:-

- 1) Round Table Seating 350 Guests
- 2) Theatre Style Seating 800 Guests



The Meeting Rooms

THE MEETING ROOMS FOR:-

- 1) Meeting Rooms - Ruby
- 2) Meeting Rooms - Sapphire
- 3) Meeting Rooms - Emerald 1 & 2





The Everest Hotel
K A T H M A N D U





NOT
BEEN TO
MT. EVEREST
YET ?

EVEREST DIRECT

NO FRILLS. DIRECT TO EVEREST. SIMRIK, THE SAFEST.

WWW.SIMRIKAIR.COM



ROUTE

INDIA AIRPORT - KTM AIRPORT - LUKLA -
EVEREST BASE CAMP - LUKLA -
KTM STAY(*) - INDIA AIRPORT

3 DAYS, 2 NIGHTS PACKAGE @ \$1600 ONLY
PER PERSON

WHATSAPP- +977 9840484761, TINKUNE, KATHMANDU, NEPAL



KATHMANDU & NAGARKOT

Skeletal Itinerary

Day 1	Arrival in Kathmandu. Transfer to hotel.
Day 2	Sightseeing tour of Kathmandu.
Day 3	Sightseeing in Bhaktapur
Day 4	Departure

Overview

This itinerary in Nepal is ideal for those who enjoy visiting places with snow-capped mountains, stunning sunrises, and historical monuments and temples. Kathmandu is a great place to visit if you want to see temples, learn about art and culture, and sample authentic Nepalese cuisine. And when it comes to panoramic Himalayan views, Nagarkot has it all. Hiking and nature walks are some of the adventure activities you can participate in.

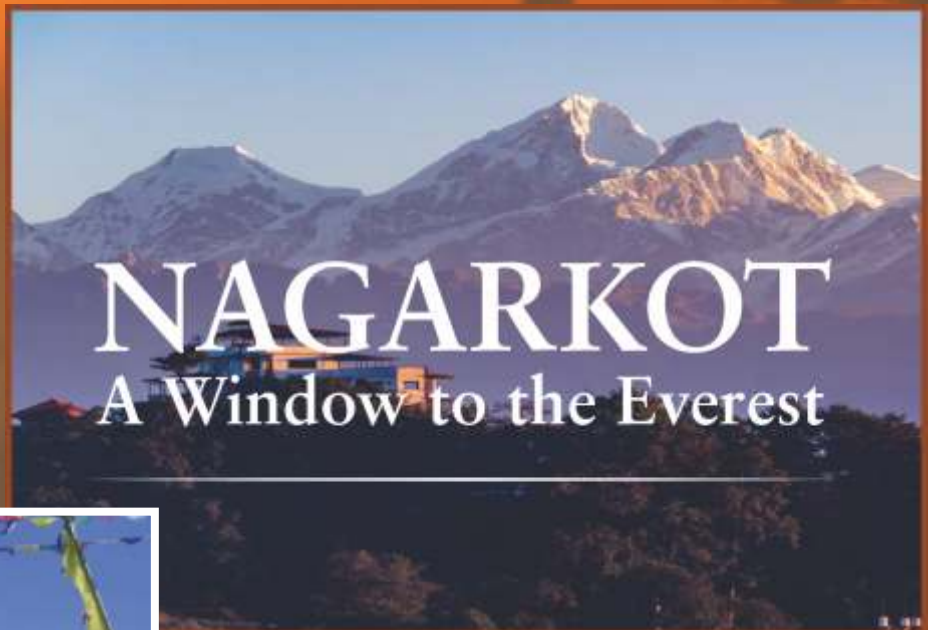
Suggested Programme

Day 01: Arrival Kathmandu.

Upon arrival, you will be warmly welcomed by our representatives at Kathmandu – a hub of very rich culture, art and tradition. After reaching, check-in at the hotel and spend the rest of the evening at leisure. Overnight at Kathmandu.

Day 02: Kathmandu-Nagarkot

After breakfast, a full-day sightseeing tour of **Pashupatinath Temple**; a heritage site dedicated to Lord Shiva and popular for traditional cremation on the bank of Bagmati River, **Boudhanath Stupa**; biggest stupa of Nepal which is also a hub for meditation and also pilgrimage sites for Buddhist and other visitors also. Kathmandu Durbar Square: a historical site that embraces palaces and courtyards of old Malla and Shah Kings dates back from 14 to 15 centuries onwards. And also visit **Kumari Ghar**; a house of the living goddess Kumari & **Swyambhunath Stupa**; stupa style on the top of a hill offering the breathtaking vision of the complete Kathmandu valley then descend from temple stepping on 365 stone steps. Later, drive to Nagarkot hill. Possibility of Sunset/mountain view from the hotel (weather permitting). Overnight at Nagarkot.



Day 03: Nagarkot-Bhaktapur-Kathmandu

Early morning, the possibility of mountain/sunrise view from the hotel (weather permitting). After breakfast, drive to Bhaktapur for sightseeing. The **Bhaktapur Durbar Square** is another UNESCO World Heritage Site and is a wonder of traditional and religious architecture. You will also see the beautiful Nyatapola Temple with its five levels of pagoda roof symbolizing the five basic elements of all creation. This is the tallest pagoda in Nepal which reflects beautiful Newari architectural skills artistry. Your tour will also take you to the Pottery Square where one can see pots being made using fire and traditional methods Later, drive to Kathmandu. Overnight at Kathmandu.

Day 04: Departure

We will drive you to airport for departure on the basis of your scheduled flight.

Highlights

KATHMANDU

- Visit to Pashupatinath Temple
- Visit to Swoyambhunath Temple
- Visit to Kathmandu Durbar Square
- Visit Kumari Ghar
- Visit Boudhanath Stupa

BHAKTAPUR

- Visit to Bhaktapur Darbar Square
- Visit to Nyatapola Temple
- Visit to Pottery Square

NAGARKOT

- Sunset/ Sunrise/ Mountain view from Nagarkot (weatherpermitting)



Hotel Yak & Yeti

Hotel Yak & Yeti is a luxury 5-star hotel in the heart of Kathmandu offering sophisticated comfort and elegance in grounds steeped in history. Located at fashionable Durbar Marg, Yak & Yeti is just minutes from Kathmandu's best shops and restaurants and central to all of the city's sights.

The Hotel

On the 27th September 1977, the Yak & Yeti opened as a 120 room, 5-star hotel – the first of its kind in Nepal. A new wing of an additional 150 rooms was built in harmony with the architectural features of the old palace, Lal Durbar, bringing the room total to 270.

The whole hotel is a sumptuous array of beautiful artefacts, art and traditionally crafted fixtures. Attention to detail has been meticulously considered throughout, giving the feeling you aren't just in a hotel as much as an art gallery or museum.

We proudly offer two dining choices – our Fine Dining Restaurant – Spice Room overlooking the garden and The Chimney, our historic, fine dining restaurant.

Over the years the hotel has been upgraded and extended and now boasts a shopping arcade, a swimming pool, two tennis courts and a state of the art fitness center and luxury spa.

We also offer a comprehensive business center as well as an exclusive Executive floor and Club Shangri-La. Our club floor provides a boardroom and a lounge for breakfast as well as cocktails every evening.



YAK & YETI
KATHMANDU



Yak & Yeti Restaurant

The Yak & Yeti restaurant and bar of the Royal Hotel had been a popular destination so Boris opened another restaurant in the Lal Durbar palace along with his business partner, Radhe Shyam Saraf. This was still the only fine dining restaurant in Kathmandu and garnered a good reputation with Boris' creative international menu. The idea of expanding into a hotel followed naturally and after four years of building, the Yak & Yeti Hotel opened on 27 September 1977 to celebrate world tourism day. Initially 120 rooms, in the early 90s, an extension of an additional 150 rooms was added bringing the total to 274 rooms for this 5-star property. The new wing was designed to complement the style of Lal Durbar and throughout the property traditional Nepali features have been preserved to offer an exceptional environment while providing all the modern facilities and comforts required for 5-star luxury. The Yak & Yeti Hotel as it stands today is inextricably linked to Nepal's colorful history, proudly showcasing the beautifully restored Lal Durbar space as part of Kathmandu's biggest convention center. Artefacts and antiques have been lovingly preserved throughout the property maintaining the Rana splendor of long ago.

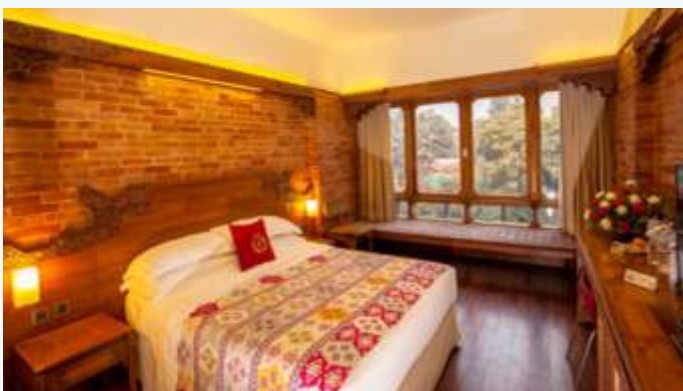


The Rooms

All 270 rooms at the Yak & Yeti offer comfort and luxury. All the features you would expect from a 5-star hotel, every room is fitted with smoke detectors, safe locks, a desk, LCD TV with satellite reception, tea/coffee making facilities, phone, high-speed internet/Wi-Fi and a minibar.

Rooms:

- a) Deluxe Room
- b) Heritage Deluxe Room
- c) Club Shangri-La Executive Rooms
- d) The Junior Suites
- e) The Business Suites
- f) The Presidential Suites





Conference & Events

THE LAL DURBAR CONVENTION CENTER

The historic Lal Durbar Convention Center has an array of spaces available for every type of function. Our professional event planning team is on hand to help you plan your event every step of the way. Your complete satisfaction is our priority and the success of your event is our goal. Let us help you plan the function of a lifetime.

- a) Regal Ballroom
- b) The Regency Hall
- c) The Durbar Hall
- d) Dynasty Hall
- e) Crystal Hall
- f) Senate and Viceroy

CAPACITY CHART

HALL NAME	FLOOR AREA (FT)	STANDING RECEPTION	CABARET STYLE	THEATER STYLE	U - SHAPE	CLASS ROOM	CEILING HEIGHT(FT)	CLEAR HEIGHT(FT)
Regal I & II	144x59	1000	440	800	160	360	22	16
Regal I	72x59	500	160	350	72	160	22	16
Regal II	72x59	500	160	350	72	160	22	16
Durbar	80x27	240	140	220	70	110	14	11
Dynasty	49x32	50	50	50	—	—	17	11
Regency	49x32	150	64	140	36	70	14	8
Platinum Hall	49.5x33	150	64	140	36	70	12.21	7.59
Crystal	49x32	150	64	140	36	70	16	9
Senate	22x15	25	—	20	12	12	—	11
Viceroy	22x15	25	—	20	12	12	—	11
Balcony	10x29	20	—	—	—	—	—	—



PHARPING, DAKSHINKALI

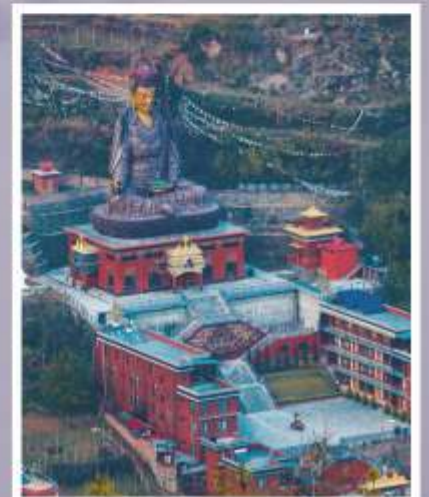
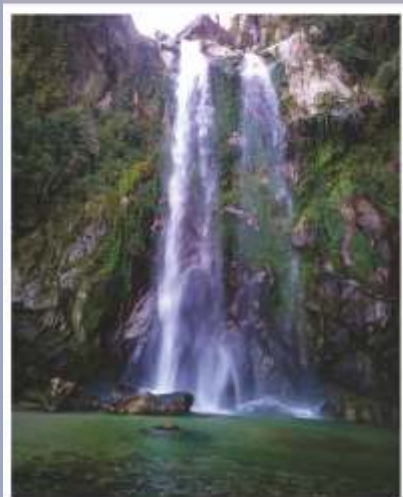
The ancient village of Pharping (Yang-Le-Sho) and Dakshinkali is located at the entrance to Kathmandu Valley from the south, home to over 30 Tibetan Monastries. The village is 30km from Kathmandu Airport, about an hour drive.



Ancient sacred temples like Dakshinkali, Vajra Yogini, and Asura Cave, Guru Rimpoche and several Goddess Temples layed on crystal rock at an altitude of 1700m.

Both Hindu and Buddhist Pilgrims have a lot to see and experience here.

Short and long hiking trials are easy to access from the resort. Kulekhani lake with it's wild beauty, boating, camping and picnics is just 20km away.



JOY SOURCE RESORT

VILLAGE FARM BOTIQUE RESORT

Welcome to Paradise, Joy Source Resort with breath taking views of the Pharping village and the snow-capped Himalayas from Mt. Everest to Mt. Ganesh.

The property is surrounded by fresh wild forests, lush organic farms and an authentic village feel. Our charming artistic cabins are cozy and comfortable for lazy stays, yoga, meditation, and family gatherings. Our country kitchen and bakery uses organic locally grown ingredients for delicious choice of veg and non-veg meals.

We are socially responsible community with a free school for the village children, an artistic haute couture clothing Atelie, hand crafted by the local village people.

A personalised and experiential stay for a traveller looking for difference.



www.joysourceresort.com



resort.joysource@gmail.com



[facebook/JoySourceResort](https://www.facebook.com/JoySourceResort)



+977-985 102 6162



KATHMANDU, NAGARKOT & POKHARA

Skeletal Itinerary

Day 1	Arrival in Kathmandu. Transfer to hotel.
Day 2	Sightseeing tour of Kathmandu.
Day 3	Visit Manakamana Temple by cable car
Day 4	Excursion to Sarangkot. Half day Pokhara sightseeing
Day 5	Drive to Kathmandu. Day at Leisure.
Day 6	Departure

Suggested Programme

Day 01: Arrival Kathmandu

Upon arrival, you will be warmly welcomed by our representatives at Kathmandu – a hub of very rich culture, art and tradition. After reaching, check-in at the hotel and spend the rest of the evening at leisure. Overnight at Kathmandu.

Day 02: Kathmandu – Nagarkot.

After breakfast, full-day sightseeing tour of **Pashupatinath Temple**; a heritage site dedicated to Lord Shiva and popular for traditional cremation on the bank of Bagmati River, **Boudhanath Stupa**; biggest stupa of Nepal which is also a hub for meditation and also pilgrimage sites for Buddhist and other visitors also. Kathmandu Durbar Square: a historical site that embraces palaces and courtyards of old Malla and Shah Kings dates back from 14 to 15 centuries onwards. And also visit **Kumari Ghar**; a house of the living goddess Kumari & **Swoyambhunath Stupa**; stupa style on the top of a hill offering the breathtaking vision of the complete Kathmandu valley then descend from temple stepping on 365 stone steps. Later, drive to Nagarkot hill. Possibility of Sunset/mountain view from the hotel (weather permitting). Overnight at Nagarkot.

Day 03: Nagarkot – Pokhara

Early morning, the possibility of mountain/sunrise view from the hotel (weather permitting). After



breakfast, drive to Pokhara via Kathmandu. En-route, visit **Manakamana Temple** by cable car. Evening walk along Lake Phewa and enjoy the fantastic international Cuisine Served as the several chic restaurant around. Overnight at Pokhara.

Day 04: Pokhara

Early morning, excursion to **Sarangkote**; small hilltop which is famous for its breathtaking view of sunrise rest & panoramic sweep of Himalayan peaks. Enjoy the amazing scenery from the top of Sarangkot. Later, half-day Pokhara sightseeing visiting **Bindhyabasini Temple**; devoted to Goddess Durga and located on the laps of Machhapuchhre and Annapurna, **Talbarahi Temple** located at the center of Phewa Lake where you can also see the reflections of Mount Annapurna and Mount Fishtail, Gupteshwor Mahadev cave, Mahendra cave, Seti gorge along with a boat ride on Phewa lake.

Day 05: Pokhara – Kathmandu

After breakfast drive back to Kathmandu. Enjoy a full day at leisure. Overnight in Kathmandu.

Day 06: Departure

After breakfast, you will be transferred to Kathmandu airport for a return flight back home.

Highlights

KATHMANDU

- Visit to Pashupatinath Temple
- Visit to Swoyambhunath Temple
- Visit to Kathmandu Durbar Square
- Visit Kumari Ghar
- Visit Boudhanath Stupa

NAGARKOT

- Sunset/ Sunrise/ Mountain view from Nagarkot (weather permitting)

POKHARA

- Visit Manakamana Temple by cable
- Excursion to Sarangkot
- Visit Bindhyabasini Temple
- Visit to Talbarahi Temple
- Visit to Gupteshwor Mahadev cave
- Visit Mahendra cave
- Visit Seti Gorge
- Boat ride on Phewa lake



LAMATAR HOME



Nestled in the south-eastern foothills of the Kathmandu valley, this lovely hideaway property is at the end of a pleasant drive through the old Newari town of Lubhu. Crafted in traditional Nepali architectural style with maximum use of natural materials, the house sits at approx. 5000 ft at the edge of community forests and has superb northfacing views of the Himalayan range over Kathmandu valley. Built to accommodate a contemporary lifestyle in a traditional setting, it was de-veloped from an orchard, which continues to provides year-round organic fruit and vegetables.



The property comes with a spacious cabin-style modern house with all amenities, concealed garage, and caretaker quarters. Amenities include all furnishings and furniture, carpets, curtains, and linen, fully equipped kitchen included separate gas oven, laundry room with washing machine, one master bedroom and attached bathroom, one smaller bedroom with bath room, two telephone connections with IDD, cable TV, 24-hr water with solar heating, 10,000 litre water storage, and 5KVA backup generator. Three fulltime staff (one resident) take care of the property. Crafted in traditional Nepali architectural style with maximum use of natural materials, the house sits at approx. 5000 ft at the edge of community forests and has superb northfacing views of the Himalayan range over Kathmandu valley. About 25 minutes due east from Patan, it is a suitable weekend retreat for embassies and foreign missions or an excellent longtem residence for a small expat family

VIVANTA

KATHMANDU

OVERVIEW

Vivanta Kathmandu is contemporary hotel that offers business and leisure travellers a world-class experience in the most buzzing precinct in Kathmandu Valley. Fresh as the mountain breeze and humming with excitement, Vivanta Kathmandu is the perfect amalgamation of traditional Nepali Hospitality and swish Vivanta charm. The Hotel has 110 swank rooms, avant-garde restaurants with breathtaking views, a spa and fitness centre and Kathmandu's only rooftop heated infinity swimming pool.

Sophisticated, luxurious, spacious and well-appointed rooms give you a warm welcome. Replete with a mini bar, upholstered headboard walls, floor rugs, rain showers and a 43 inch LCD television, the rooms also look out onto spectacular city escapes.



ROOMS CATEGORY

- Superior Rooms
- Deluxe Rooms
- Premium Rooms
- Executive Suits







KATHMANDU, POKHARA & MUKTINATH

Skeletal Itinerary

Day 1	Kathmandu arrival.
Day 2	Drive to Pokhara
Day 3	Fly to Jomsom and visit Muktinath
Day 4	Fly back to Pokhara & Half day sightseeing of Pokhara.
Day 5	Drive back to Kathmandu
Day 6	Full day Kathmandu sightseeing & rest is free for individual activities like shopping.
Day 7	Departure

Suggested Programme

Day 01: Arrival Kathmandu

Upon arrival, you will be warmly welcomed by our representatives at Kathmandu – a hub of very rich culture, art and tradition. After reaching, check-in at the hotel and spend the rest of the evening at leisure.

Day 02: Kathmandu-Pokhara

After breakfast, drive to Pokhara via Kathmandu. En-route visit **Manakamana Temple** by cable car. Evening walk along the Phewa Lake and enjoy the excellent cuisine at the several cafes and restaurants at the lakeside of the Pokhara. Overnight at Pokhara.

Day 03: Pokhara-Jomsom

After breakfast, transfer to Pokhara airport. Take a half an hour flight to reach Jomsom. Later will take you on a Jeep drive through interesting and rugged terrain followed by half an hour walk to **Muktinath Temple**. Overnight at Jomsom



Day 04: Jomsom-Pokhara

After breakfast, transfer to Jomsom airport. Take a half an hour flight to reach back to Pokhara, check in to the hotel and refresh. Later, half-day Pokhara sightseeing visiting **Bindhyabasini Temple**, devoted to Goddess Durga and located in the laps of Machhapuchhre and Annapurna mountains. **Talbarahi Temple**, located at the center of Phewa Lake where you can also see the reflections of Mount Annapurna and Mount Fishtail; **Gupteshwor Mahadev cave**, **Mahendra cave**, **Seti gorge** along with a boat ride on Phewa lake.

Day 05: Pokhara – Kathmandu

After breakfast drive back to Kathmandu. Enjoy a full day at leisure. Overnight in Kathmandu.

Day 06 : Kathmandu

After breakfast, full-day sightseeing tour of **Pashupatinath Temple**;- a heritage site dedicated to Lord Shiva and popular for traditional cremation on the banks of Bagmati River. **Boudhanath Stupa**;- biggest stupa of Nepal which is also a hub for meditation and a famous pilgrimage sites for Buddhists from across the world. **Kathmandu Durbar Square**;- a historical site that embraces palaces and courtyards of old Malla and Shah Kings dating back from 14th to 15th centuries. And also visit **Kumari Ghar**;- a house of the living goddess. **Swoyambhunath Stupa**; stupa style temple structure atop a hill offering a breathtaking view of the complete Kathmandu valley. Witness the congregation of large number of monkeys at the location before descending the 365 stone steps. Overnight at Kathmandu.

Day 07 : Departure

After breakfast, you will be transferred to Kathmandu airport for a return flight back home.

Highlights

KATHMANDU

- Visit to Pashupatinath Temple
- Visit to Swoyambhunath Temple
- Visit to Kathmandu Durbar Square
- Visit Kumari Ghar
- Visit Boudhanath Stupa
- Visit Manakamana Temple by cable
- Excursion to Sarangkot

JOMSOM

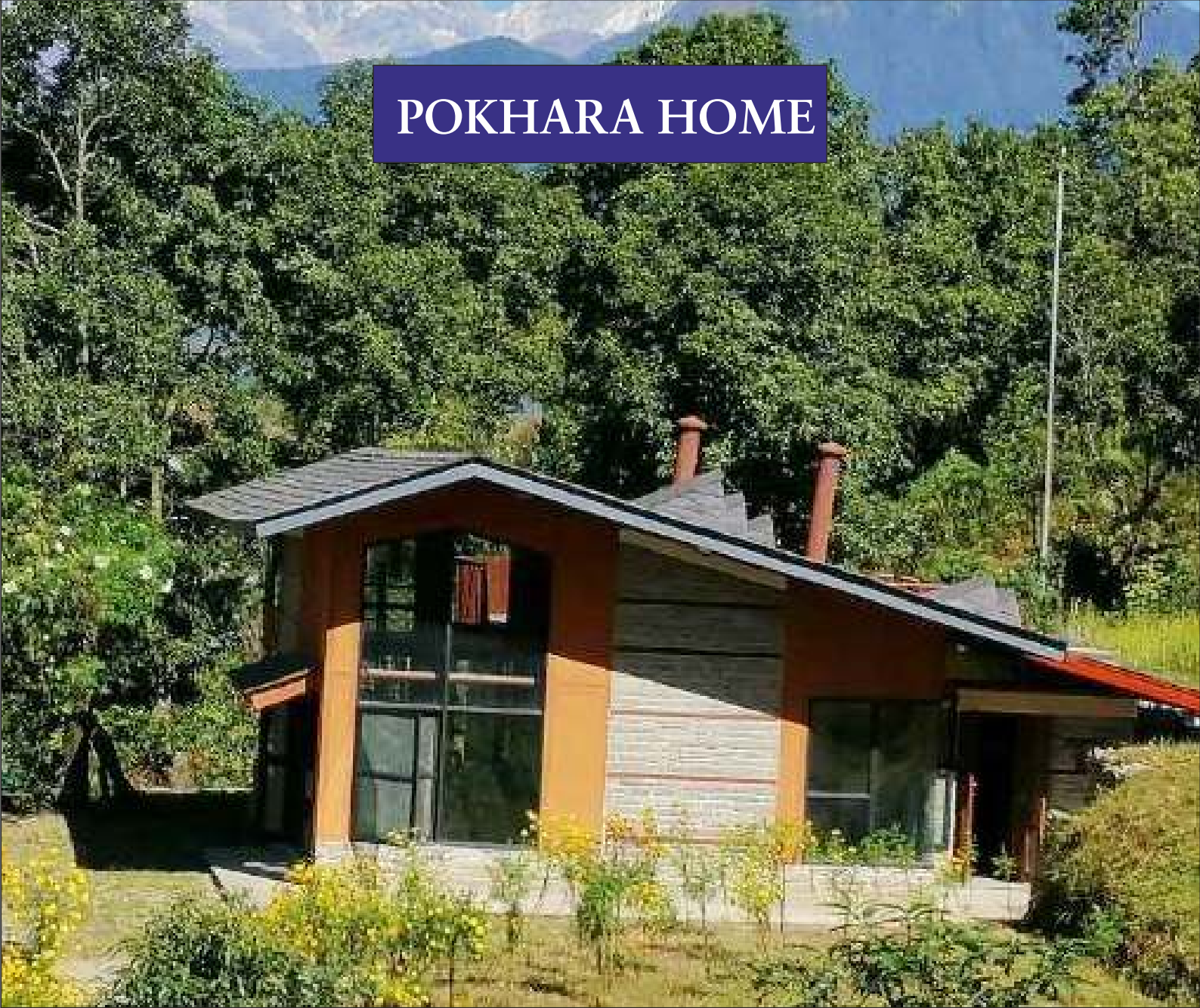
- Visit to Muktinath Temple

POKHARA

- Visit Manakamana Temple by cable
- Excursion to Sarangkot
- Visit Bindhyabasini Temple
- Visit to Talbarahi Temple
- Visit to Gupteshwor Mahadev cave
- Visit Mahendra cave
- Visit Seti Gorge
- Boat ride on Phewa lake



POKHARA HOME



POKHARA

Facing the majestic Annapurna range, this stunning property is located at 4500 feet above idyllic Pokhara and surrounded on three sides by light, deciduous forest. Favored by nature lovers and birdwatchers, the area is a quiet alternative for those who value privacy. Designed as an ecofriendly vacation getaway from Kathmandu, the glass-steel-stone structure of the house provides a modern interpretation of vernacular themes of the middle hills incorporating slate roof tiles edges with copper sheets, stone-wrapped steel pillars supporting adobe walls, and lime improved mud mortar. Carefully placed apertures in the roof allow morning sunlight and evening moonlight to enter and track across the interior living spaces. The house is earthquake resistant, all doors and windows have double glazing, to retain the sun's warmth. The thermal insulation of the roof adds to keeping the house warm in the winter and cool in the summer. The natural cross ventilation takes advantage of mountain breeze to refresh the interiors. Amenities include all furnishings, linen, fully equipped kitchen including separate electric oven, one master bedroom and attached tub-equipped bathroom, a mezzanine sleeping/study area, separate toilet with shower, and 24-hr solar-heated water.

For Booking Contact :



+91 8080213696



Info@navyush.com



YETI MOUNTAIN HOME



Yeti Mountain Home is a group of comfort lodges situated on a world famous trekking route in the Khumbu/Everest region of Nepal. It provides indulgent comfort, high quality cuisine and a very warm Sherpa hospitality to weary trekkers.

Situated in stunning positions amongst the world's highest mountains and reachable by wonderful trekking trails the six YMH Lodges offers modern creature comforts in the rich, lustrous decor of traditional Sherpa design. Each lodge has 10 – 20 spacious but cosy rooms with private facilities

YMH LODGES

YMH LUKLA



“Conveniently situated at the gateway to the Khumbu, YMH Lukla provides the perfect beginning and end to your trekking holiday.”

“With its organic gardens and peaceful riverside location, YMH Phakding is a perfect green haven for weary trekkers.”

YMH PHAKDING



YMH MONJO



“The newest of our lodges, YMH Monjo is steeped in luxury, with acres of space and all fitted out in classic Sherpa style with some of our most experienced staff. You’ll enjoy a warm and very comfortable stay at Monjo.”

YMH NAMCHE

“Perched on the upper slopes of the bustling Sherpa capital, YMH Namche is breathtaking – literally! Voted best YMH of 2011. Now with Himalayan Healers spa.”



YMH KONGDE



“The highest of our lodges, YMH Kongde holds unparalleled views over the entire Everest range. It’s amazing! ”

“Surrounded by snowy white peaks, nestled beneath the protecting gaze of Thame Gompa, YMH Thame is a delightful, cosy retreat. You may never want to leave!”

YMH THAME



MEMOIRS OF EVEREST



Overview

A great short trek to get up into high places, explore ethereal mountain monasteries and rich local traditions.

This trek gives chance to stretch out and relish some fabulous Himalayan hiking but still plenty of time to relax and explore.

Along the way we will be staying at Comfort lodges of Yeti Mountain Home in Monjo, Namche, Thame, and Kongde. This program is specially designed to cater trek & pilgrimage combined together in which the trekker can enjoy the taste of the adventure tourism along with the ancient monastery along the trail with its historic value. Thame is at the end of Khumbu Valley and iconic value of Thame is its terrain the people which are untouched by the effects of modern civilization.

Overall this place is internationally recognized as the home of world-famous Mountaineers such as renowned Tenzing Norgay Sherpa: the first ever Mount Everest summiteers in the mountaineering history, Ang Rita Sherpa: recognized as snow leopard and Apa Sherpa: a World Recorder Everest nineteen times Everest Summiteers.





TRIP FACTS:

Trip Duration: 08 Nights / 09 Days

Trekking Grade: Moderate Level

Trip Activity: Comfort Treks

Maximum altitude: 5000M (Parchemuche Lake) & 4800M (Kongde)

Accommodation:

- [Yeti Mountain Home Lodges \(Comfort Lodges\)](#) in Everest Region
- [Dwarika's Hotel \(Heritage Junior Suite Room\)](#) in Kathmandu

TRIP HIGHLIGHTS:

- Exhilarating Heli sightseeing tour of Everest Region
- Hiking to unexplored & pristine Parchemuche Tso Lake
- Champagne Breakfast at YMH Kongde – one of the highest hotel in the world located at an elevation of 4250M.
- Talk program hosted by Everest Summitter – sharing his Mountaineering experience
- Welcome by Cultural Sherpa Dance Performance by Local Sherpa Mothers at Kongde
- Experience local Sherpa Culture and hospitality while staying at Comfort Lodges

BREIF ITINERARY:

Days	Program	Accommodation	Meals
Day 1	Arrive in Kathmandu (1300M), transfer to Dwarika's Hotel	Dwarika's Hotel	-
Day 2	Helicopter transfer to Lukla (2860M) and trek to Monjo(2850M): Approx.5 Hrs Walk	YMH Lodges	B L D
Day 3	Trek to Namche (3440M): Approx. 6 Hrs Walk.	YMH Lodges	B L D
Day 4	Rest day in Namche – Stroll around the village, Evening Talk program with Everest Summitter who will share his Mountaineering Experience	YMH Lodges	B L D
Day 5	Trek to Thame (3820M): Approx. 6 Hrs Walk	YMH Lodges	B L D
Day 6	Hike to Parchemuche Tso Lake (5000M): Approx. 4 Hrs Walk	YMH Lodges	B L D
Day 7	Trek to Kongde (4250M). Approx. 7 Hrs Walk. Welcome by Traditional Sherpa Culture performance.	YMH Lodges	BLD
Day 8	Heli sightseeing tour to Everest and then fly to Kathmandu.	Dwarika's Hotel	B L
Day 9	Final Departure	-	B



KATHMANDU, POKHARA & CHITWAN

Skeletal Itinerary

Day 1	Arrival in Kathmandu. Transfer to hotel.
Day 2	Sightseeing tour of Kathmandu
Day 3	Visit Manakamana Temple by cable car
Day 4	Excursion to Sarangkot. Half day Pokhara sightseeing
Day 5	Drive to Chitwan. Day at Leisure.
Day 6	Jungle activities in Chitwan
Day 7	Drive to Kathmandu. Evening at leisure
Day 8	Departure



Suggested Programme

Day 01: Arrival Kathmandu

Upon arrival, you will be warmly welcomed by our representatives at Kathmandu – a hub of very rich culture, art and tradition. After reaching, check-in at the hotel and spend the rest of the evening at leisure.

Day 02: Kathmandu

After breakfast, full-day sightseeing tour of **Pashupatinath Temple**; a heritage site dedicated to Lord Shiva and popular for traditional cremation on the bank of Bagmati River, **Boudhanath Stupa**; biggest stupa of Nepal which is also a hub for meditation and also pilgrimage sites for Buddhist and other visitors also. **Kathmandu Durbar Square**: a historical site that embraces palaces and courtyards of old Malla and Shah Kings dates back from 14 to 15 centuries onwards. And also visit **Kumari Ghar**; a house of the living goddess Kumari & **Swoyambhunath Stupa**; stupa style on the top of a hill offering the breathtaking vision of the complete Kathmandu valley then descend from temple stepping on 365 stone steps. Overnight at Kathmandu.

Day 03: Kathmandu – Pokhara

After breakfast, drive to Pokhara via Kathmandu. En-route, visit Manakamana Temple by cable car. Evening walk at the lakeside of the Pokhara. Overnight at Pokhara.

Day 04: Pokhara-Sarangkot-Pokhara

Early morning, excursion to **Sarangkot** hill; small hilltop which is famous for its breathtaking view of sunrise rest & panoramic sweep of Himalayan peaks. Enjoy the amazing scenery from the top of Sarangkot. Later, half-day Pokhara sightseeing visiting **Bindhyabasini Temple**; devoted to Goddess Durga and located on the laps of Machhapuchhre and Annapurna, **Talbarahi Temple** located at the center of Phewa Lake where you can also see the reflections of Mount Annapurna and Mount Fishtail, Gupteshwor Mahadev cave, Mahendra cave, Seti gorge along with a boat ride on Phewa lake.

Day 05: Pokhara – Chitwan

After breakfast, drive to Chitwan- meaning ‘**Heart of the Jungle**’, is one of the premier drawcards in Nepal. The World Heritage-listed reserve protects over 952 sq. km of forests, marshland and rippling grassland, and is home to sizeable populations of wildlife. On arrival check-in at your hotel. Rest of the day leisure at the hotel. Overnight in Chitwan.

Day 06: Chitwan

Today after breakfast, start with an **Jungle Safari**, which provides an opportunity to get a close view of the endangered one-horned rhinoceros. You may also get a glimpse of the elusive Bengal tiger. Later, hop on to a wooden canoe for a tour of the Rapti River, where one can see Gharial crocodiles sunbathing on the shores. The rest of the day will be free for leisure or enjoying jungle activities such as nature walk. Overnight in Chitwan.

Day 07: Chitwan – Kathmandu

After breakfast, drive to Kathmandu. Spend an evening at leisure. Overnight stay in Kathmandu.

Day 08: Departure

After breakfast, you will be transferred to Kathmandu airport for a return flight back home.

Highlights

KATHMANDU

- Visit to Pashupatinath Temple
- Visit to Swoyambhunath Temple
- Visit to Kathmandu Durbar Square
- Visit Kumari Ghar
- Visit Boudhanath Stupa
- Visit Manakamana Temple by cable
- Excursion to Sarangkot

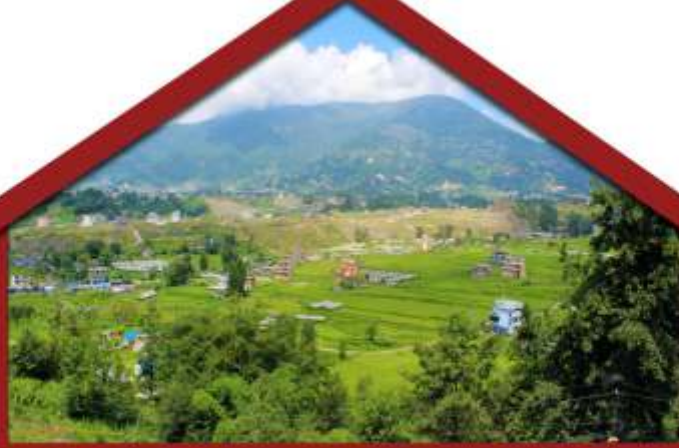
CHITWAN

- Regular jungle activities in Chitwan

POKHARA

- Visit Manakamana Temple by cable
- Excursion to Sarangkot
- Visit Bindhyabasini Temple
- Visit to Talbarahi Temple
- Visit to Gupteshwor Mahadev cave
- Visit Mahendra cave
- Visit Seti Gorge
- Boat ride on Phewa lake





Tokha Holiday Home is a great place to get away from the hustle and bustle of the city without feeling isolated or cut off from amenities. It is 11 km from Kathmandu's Tribhuvan International Airport and 7 km from Thamel, a bustling tourist area. It's a four-bedroom house. The home's warm atmosphere is created by the intricate inlaid woodwork. On the roof and ground level patios, there is plenty of open space for gazing or relaxing. The location offers spectacular mountain views and is ideal for cycling and hiking trips.

Amenities :- Reverse Osmosis filtration drinking water system

- Refrigerator
- Iron
- Kettle
- Linens Provided
- Microwave
- Cooker
- Toaster
- Towels Provided
- Free Wi-fi

For Booking Contact :

📞 +91 8080213696
✉️ Info@navyush.com



MEGHAULI SERAI, A TAJ SAFARI

A Nature Lover's Delight

Nepal's Leading Luxury Safari - Meghauli Serai

Unique in its own manner, Meghauli Serai offers Taj hospitality's signature luxury proposition in a splendid format that syncs with the atmosphere of Nepal's most famous jungle reserve. Even a laidback stay at the luxury lodge would make one experience the private and isolated feel of a jungle—so dearly missed by city dwellers. This luxury lodge has been specifically designed for wildlife enthusiasts, offering one luxurious Presidential Suite, 16 independent villas with private plunge pools, and 12 contemporary rooms. Guests get to enjoy 'Jeep Safaris, Boat Safaris, Walking Safaris' to see Great Hornbill, Ruddy Shelduck, and approximately 68 species of mammals in the heart of the jungle and to absorb its true atmosphere to the fullest, while being aptly guided by professionally trained naturalists of Taj Safaris. While coming back to the lodge, guests can treat themselves to relaxing dip in the shimmering infinity pool and sip cocktails at the outdoor deck restaurant, enjoying the flowing river alongside.





Meghauli Serai Lodge, owned and managed by CG Hospitality with the Taj Safari brand is a luxurious five star hidden jungle lodge overlooking river Rapti to face Chitwan National Park in central Nepal. The park, a world heritage site, is one of the best wildlife viewing national parks in Asia. Taj Safari Meghauli Serai has been awarded as the Best Wildlife Resort/Hotel in Nepal and Best Wildlife Resort/Hotel in South Asia, in South Asian Travel Awards 2018.





MEGHAULI SERAI, A TAJ SAFARI A Nature Lover's Delight





KATHMANDU, POKHARA, LUMBINI & CHITWAN

Skeletal Itinerary

Day 1	Kathmandu arrival.
Day 2	Drive to Pokhara
Day 3	Pokhara Sightseeing.
Day 4	Pokhara to Lumbini
Day 5	Lumbini to Chitwan
Day 6	Chitwan activities.
Day 7	Drive back to Kathmandu
Day 8	Kathmandu sightseeing.
Day 9	Departure

Suggested Programme

Day 01: Arrival Kathmandu

Upon arrival, you will be warmly welcomed by our representatives at Kathmandu – a hub of very rich culture, art and tradition. After reaching, check-in at the hotel and spend the rest of the evening at leisure.

Day 02: Kathmandu –Pokhara

After breakfast, drive to Pokhara a natural city of lakes and mountains. En-route, visit **Manakamana Temple** by cable car. Evening walk at the lakeside of the Pokhara. Overnight at Pokhara.



Day 03: Pokhara-Sarangkot-Pokhara

Early morning, excursion to Sarangkot hill for sunrise view from the mountain early; small hilltop which is famous for its breathtaking view of sunrise rest & panoramic sweep of Himalayan peaks. Enjoy the amazing scenery from the top of Sarangkot. Later, half-day Pokhara sightseeing visiting Bindhyabasini Temple; devoted to Goddess Durga and located on the laps of Machhapuchhre and Annapurna, Talbarahi Temple located at the center of Phewa Lake where you can also see the reflections of Mount Annapurna and Mount Fishtail, Gupteshwor Mahadev Cave, Mahendra Cave, Seti Gorge along with a boat ride on Phewa lake.

Day 04: Pokhara-Lumbini

After breakfast, we will move for the most important Buddhist pilgrimages of Nepal-Lumbini, the birthplace of Lord Buddha. Overnight stay at the hotel at Lumbini.

Day 05: Lumbini-Chitwan

Early breakfast check-out and proceed for the sightseeing of Lumbini. The main attraction of the day is the sacred **Lumbini Garden** visit, where you can see **Mayadevi Temple**, an exact birthplace of Buddha. Lumbini is also a unique place where in the Monastic zone you can visit varieties of Buddhist monasteries and shrines constructed by Buddhist communities from all over the world and then depart to Chitwan. Overnight stay at Chitwan.

Day 06: Chitwan

Today after breakfast, start with an **Jungle safari**, which provides an opportunity to get a close view of the endangered one-horned rhinoceros. You may also get a glimpse of the elusive Bengal tiger. Later, hop into a wooden canoe for a tour of the Rapti River, where the Gharial crocodiles sunbathe on the shores. The rest of the day will be free for leisure or enjoying jungle activities such as nature walk. Overnight in Chitwan.

Day 07: Chitwan-Kathmandu

After breakfast, depart to Kathmandu. Arrive Kathmandu & day free for leisure. Overnight stay at the hotel at Kathmandu.

Day 08: Kathmandu

After breakfast, full-day sightseeing tour of **Pashupatinath Temple**; a heritage site dedicated to Lord Shiva and popular for traditional cremation on the bank of Bagmati River, **Boudhanath Stupa**; biggest stupa of Nepal which is also a hub for meditation and also pilgrimage sites for Buddhist and other visitors also. Kathmandu Durbar Square: a historical site that embraces palaces and courtyards of old Malla and Shah Kings dates back from 14 to 15 centuries onwards. And also visit **Kumari Ghar**; a house of the living goddess Kumari & **Swoyambhunath Stupa**; stupa style on the top of a hill offering the breathtaking vision of the complete Kathmandu valley then descend from temple stepping on 365 stone steps. Overnight at Kathmandu.

Day 09: Departure

After breakfast, you will be transferred to Kathmandu airport for a return flight back home.

Highlights

KATHMANDU

- Visit to Pashupatinath Temple
- Visit to Swoyambhunath Temple
- Visit to Kathmandu Durbar Square
- Visit Kumari Ghar
- Visit Boudhanath Stupa
- Visit Manakamana Temple by cable
- Excursion to Sarangkot



POKHARA

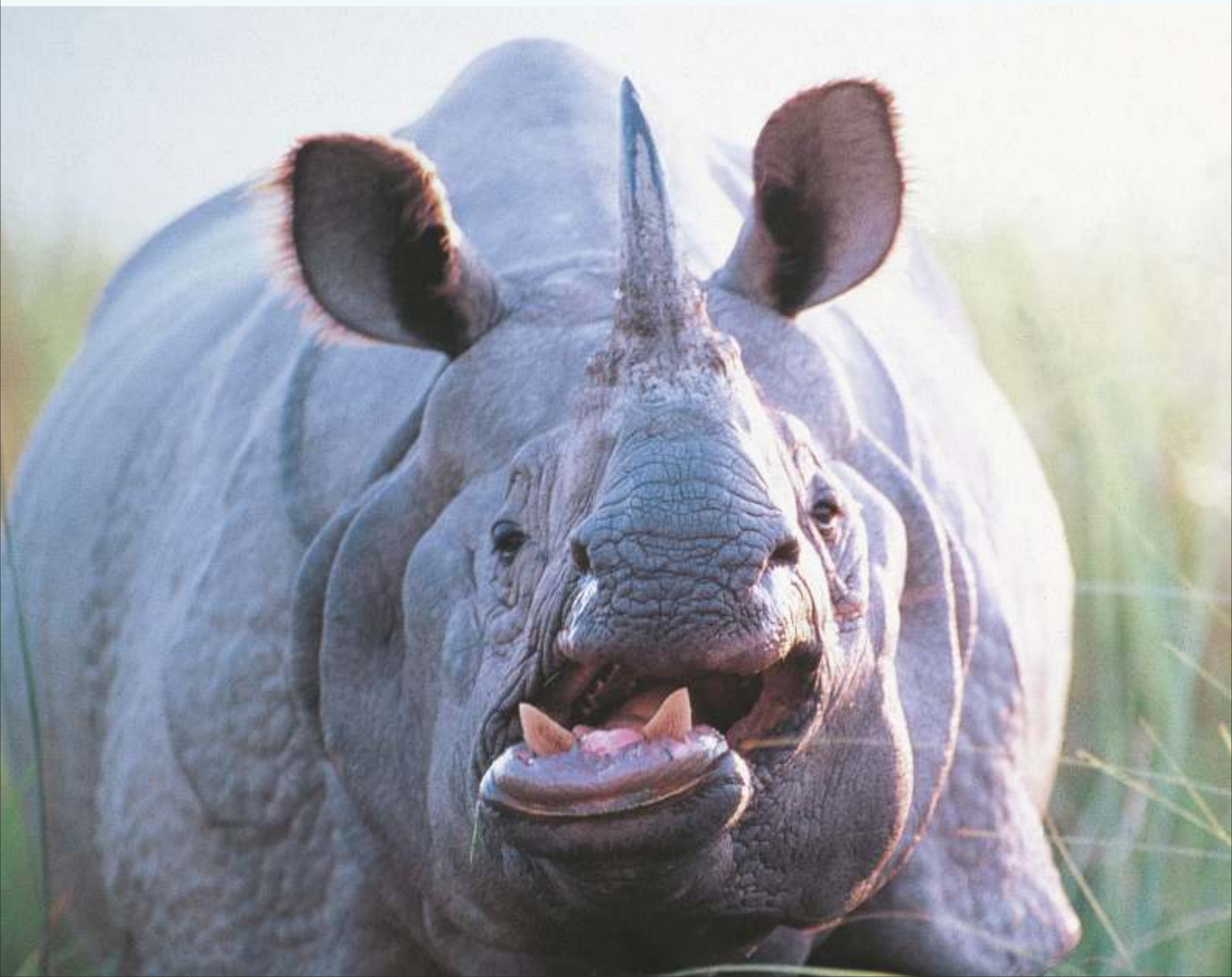
- Visit Manakamana Temple by cable
- Excursion to Sarangkot
- Visit Bindhyabasini Temple
- Visit to Talbarahi Temple
- Visit to Gupteshwor Mahadev cave
- Visit Mahendra cave
- Visit Seti Gorge
- Boat ride on Phewa lake

LUMBINI

- Visit Lumbini Garden
- Visit to Mayadevi Temple
- Visit to Monastic Zone

CHITWAN

- Regular jungle activities in Chitwan





Tiger Palace Resort, Bhairahawa, Lumbini

Tiger Palace Resort,

a 5-star integrated resort, a beautifully designed and made with pure elegance, is an exciting, heart-stopping entertainment destination at brilliant location, that provides luxurious accommodation, a world-class Casino, a range of fine dining options and selection of leisure facilities for guests of all ages.

The unforgettable experience at Tiger Palace Resort makes it an ideal location and a great venue for *Holidays, Fast breaks, Meetings, Conferences and Weddings.*

Location

Tiger Palace Resort spread over 22 acres of land is located in Bhairahawa (also known as Siddarthnagar), Lumbini, Nepal. The resort is just 08 Kms of the India- Nepal border. Indian town of Sunauli which is approximately 100 Km from Gorakhpur, is freely open for Indians & Nepalis. The Nepal capital, Kathmandu, is about 265 Kms north-east of the resort. The resort is just 10 km from domestic airport- Bhairahawa Airport.





Accessibility

By Air

Fly in to Tribhuvan International Airport at Kathmandu, Nepal and connect to a 35-minute flight to Bhairahawa's Gautam Buddha Airport. From Bhairahawa airport, Tiger Place Resort is at a distance of 10 km, approximately fifteen minutes' drive.

OR

Fly to Gorakhpur and let Tiger Place resort's airport service staff drive you comfortable to the hotel.

By Road

Distance : Delhi- (570 Km)- Lucknow- (270 Kms) -Gorakhpur- (100 Kms) -Sunauli (08 Kms)- Tiger Place resort (If can be shown as Map)

Time Approximate:

Delhi to Lucknow, via Agra, in about seven hours. From Lucknow it takes just six more hours to reach Bhairahawa, via Gorakhpur.

By Train

Train to Lucknow or Gorakhpur, then hire a cab to Sunauli border, where will be welcomed by Tiger Place resort border team.

Near By Attraction

UNESCO World Heritage Sites of Lumbini

- ❖ Royal Thai Monastery
- ❖ World Peace Pagoda
- ❖ Eternal peace fame
- ❖ Myanmar Golden Temple

Tilottama- 17, Lumbini, Nepal

✉ sales.bwa@tigerpalace.com

☎ +977 71512000

KATHMANDU, CHITWAN, LUMBINI & NAGARKOT

Skeletal Itinerary

Day 1	Arrival in Kathmandu
Day 2	Sightseeing tour of Kathmandu
Day 3	A day to remember in Kathmandu
Day 4	Kathmandu to Chitwan
Day 5	Jungle Safari in Chitwan then drive to Lumbini
Day 6	Lumbini -Kathmandu- Bhaktapur-Nagarkot
Day 7	Departure

Overview

This tour of Kathmandu, Chitwan, Lumbini and Nagarkot will give you the perfect blend of spiritual, traditional, wildlife and cultural themes while taking you to the best tourist places in Nepal. All the UNESCO Heritage sites in the Kathmandu valley, Chitwan and Lumbini are covered in this itinerary and you will stay in some of the nicest places in Nepal. Enchanting views of the various Durbar Squares in Patan, Bhaktapur and Kathmandu (Hanuman Dhoka), steeped in history, await you. A visit to the holy Pashupatinath Temple will give you a close glimpse of the rich Hindu and Buddhist cultures in Nepal. The natural landscape and great outdoor at Chitwan National Park, a UNESCO Heritage site, is an experience that you will treasure for a long time. Nagarkot is at a short distance from Kathmandu and famous for its sunrise/sunset views over the Himalayas.

Suggested Programme

Day 01: Arrival in Kathmandu

- Meet & Greet assistance at the airport & transfer to your hotel
- Welcome drink at hotel and check-in
- After relaxing for a while walk to Hanuman Dhoka from hotel (Thamel) (can use Google Maps for the walk – roughly 20 mins)
- Dinner at Restaurant (experience Nepali cuisine and a cultural evening)
- Overnight at Kathmandu



Day 02: Sightseeing tour of Kathmandu

Today, if it is a Saturday, you will experience the famous Farmer's Market that is a weekly feature in Kathmandu at the Le Sherpa in **Lazimpat**. Home-grown, local, organic produce will be available to buy and savour. From local cheese, mushrooms, pickles, sauces, vegetables, varieties of rice, bread, bakery, salads, olives, oils and abundant varieties of eatables are on display and sale in the open market with great hygiene. On any other day, you will have an early breakfast at the hotel and proceed to sightseeing for the day. You will also visit the UNESCO Heritage site of the **Pashupatinath Temple** and the famous **Swayambhunath Temple** on your way to **Chandragiri Hills** for a cable car ride and experience the rich mountains on the outskirts of Kathmandu.

- If Saturday, Skip breakfast at hotel and drive to the Farmer's Market at Le Sherpa, Lazimpat, followed by brunch at Restaurant in the same complex ELSE breakfast at hotel
- Proceed for guided tour of Pashupatinath Temple and Swayambhunath aka Monkey Temple
- Leave for Chandragiri Hills cable car and enjoy the cable car ride and Chandragiri resort. Lunch at Restaurant
- Dinner @Thamel
- Overnight in Kathmandu

Day 03: A day to remember in Kathmandu

Today your day will start rather early but it will be a day to remember for a long time. You will see the tallest peak in the world, **Mt. Everest** and other Himalayan ranges up close and experience the thrill of a lifetime. Thereafter, you will have a sumptuous English breakfast at the Cafe and drive to **Dhulikhel** for adventure activities. On your return to Kathmandu, you will visit the **Boudhanath Stupa** for a guided tour and enjoy the evening immersed in Buddhist culture. You will see the sunset from a rooftop café in Boudha under a star-studded sky.

- Early morning Everest flight (6-7 am)
- English Breakfast at cafe.
- Drive to Dhulikhel for adventure sports (optional zip lining)
- The drive to Boudhanath temple with guided tour
- Sunset and dinner at rooftop cafe around stupa
- Overnight at Kathmandu

Day 04: Kathmandu-Chitwan

You will reach **Chitwan National Park** today, A UNESCO World Heritage site that is a must-visit attraction when you visit Nepal. You will **Experience Tharu culture** and tradition, experience village lifestyle and see some rare species of wild animals.

- Breakfast @hotel - Aim to leave by 9 am if road trip to Chitwan OR as per flight time to Chitwan
- Arrive in the morning, go to hotel, Welcome drink at hotel, freshen up and proceed for sightseeing in Chitwan
- Village Walk/Ox Cart ride (for up to 6 persons) in the Tharu village in Sauraha followed by village cultural program
- Hop into a wooden canoe for a tour of the Rapti River, where the Gharial crocodiles sunbathe on the shores & swim in the Rapti river with elephants and witness sunset view on the Rapti river
- Dinner at Hotel
- Overnight in Chitwan

Day 05: Jungle Safari in Chitwan and drive to Lumbini

In the first half of the day, you will take a **Jungle Safari** in the Chitwan National Park and see other sightseeing attractions in the park. The park offers jungle activities such as elephant rides, jeep safaris, canoeing and seeing rare species of animals like the one-horned rhino, 'gharial' crocodile, wild buffaloes and many other animals are bound to thrill you. You will also see the Bishazari Taal today that is a protected region and listed wetland area in the park that is excellent for bird-watching. It is home to birds that migrate south from Siberia. In the second half of the day, you will drive to Lumbini, the birthplace of Lord Gautam Buddha approx. 90 kms from Chitwan.

- Breakfast @ hotel and checkout by 9 am
- Leave for adventure activities at Chitwan National Park elephant/jeep safari, elephant and crocodile breeding centers, sightseeing at Lamo Jharna, Bishazari Taal
- Late Lunch – packed lunch from hotel and leave for Lumbini
- See Maya Devi Temple, Bodhi Tree, Maya Devi Pond, Ashoka Pillar, World Peace Pagoda, Lumbini Museum, Royal Thai Buddhist monastery, Sri Lankan Monastery, Cambodian Monastery, Myanmar Golden Monastery
- Dinner at hotel, overnight in Lumbini

Day 06: Lumbini-Kathmandu-Bhaktapur-Nagarkot

- Breakfast @hotel -Aim to leave by 9 am if road trip to Kathmandu OR as per flight time to Kathmandu
- Drive to Nagarkot enroute visit **Bhaktapur Durbar Square** (40 mins drive, spend 30-60 mins in Bhaktapur) – Walk around the Durbar Square, take pictures and buy handicrafts/souvenirs; also known for 'Jaju Dhau' (sweet curd)
- Continue to Nagarkot Hill 30 mins from Bhaktapur and have sunset/mountain panorama view from the hotel
- Dinner at hotel
- Overnight at Nagarkot

Day 07: Departure at Kathmandu

- Breakfast @hotel, checkout, leave for Tribhuvan International Airport (45 mins to an hour drive to) OR as per return flight time from Kathmandu

Highlights

- Cultural, historical and UNESCO Heritage sightseeing (7 sights in Kathmandu, Chitwan National park and Lumbini)
- Mountain Flight to see Mt. Everest up and close
- Cable car ride at Chandragiri Hills resort
- Adventure activities in Dhulikhel
- Experience the exotic Farmer's Market in Kathmandu; Savor Nepali cuisine with a rich cultural program
- Enjoy jungle safari and adventure activities at Chitwan National Park and the traditional Tharu community and culture
- Visit the birthplace of Gautam Buddha in Lumbini and experience Buddhist culture
- Enjoy spectacular views of the Kathmandu valley from Nagarkot
- Experience the sunset/sunrise in the glorious Himalayas mountain ranges



KATHMANDU, POKHARA & NAGARKOT

Skeletal Itinerary

Day 1	Arrival in Kathmandu. Transfer to hotel.
Day 2	Sightseeing tour of Kathmandu.
Day 3	A day to remember in Kathmandu
Day 4	Kathmandu to Pokhara
Day 5	In Pokhara
Day 6	Pokhara -Kathmandu- Bhaktapur-Nagarkot
Day 7	Departure from Kathmandu

Overview

This tour of Kathmandu, Chitwan, Lumbini and Nagarkot will give you the perfect blend of spiritual, traditional, wildlife and cultural themes while taking you to the best tourist places in Nepal. All the UNESCO Heritage sites in the Kathmandu valley are covered in this itinerary and you will stay in some of the nicest places in Nepal. Enchanting views of the various Durbar Squares in Lalitpur/Patan, Bhaktapur and Kathmandu (Hanuman Dhoka), steeped in history, await you. A visit to the holy Pashupatinath Temple will give you a close glimpse of the rich Hindu and Buddhist cultures in Nepal. The natural landscape and great outdoor at Pokhara is an experience that you will treasure for a long time. Nagarkot is at a short distance from Kathmandu and famous for its sunrise/sunset views over the Himalayas.

Suggested Programme

Day 01: Arrival Kathmandu

- Meet & Greet assistance at the airport & transfer to your hotel
- Welcome drink at hotel and check-in
- After relaxing for a while walk to Hanuman Dhoka from hotel (Thamel) (can use Google Maps for the walk – roughly 20 mins)
- Dinner at Restaurant (experience Nepali cuisine and a cultural evening)
- Overnight at Kathmandu



breakfast, drive to Pokhara via Kathmandu. En-route, visit Manakamana Temple by cable car. Evening walk at the lakeside of the Pokhara. Overnight at Pokhara.

Day 02: Kathmandu

Today, if it is a Saturday, you will experience the famous Farmer's Market that is a weekly feature in Kathmandu at the Le Sherpa in Lazimpat. Home-grown, local, organic produce will be available to buy and savour. From local cheese, mushrooms, pickles, sauces, vegetables, varieties of rice, bread, bakery, salads, olives, oils and abundant varieties of eatables are on display and sale in the open market with great hygiene. On any other day, you will have an early breakfast at the hotel and proceed to sightseeing for the day. You will also visit the UNESCO Heritage site of the Pashupatinath Temple and the famous Swayambhunath Temple on your way to Chandragiri Hills for a cable car ride and experience the rich mountains on the outskirts of Kathmandu.

- If Saturday, Skip breakfast at hotel and drive to the Farmer's Market at Le Sherpa, Lazimpat, followed by brunch at Restaurant in the same complex ELSE breakfast at hotel
- Proceed for guided tour of Pashupatinath Temple and Swayambhunath aka Monkey Temple
- Leave for Chandragiri Hills cable car and enjoy the cable car ride and Chandragiri resort. Lunch at Restaurant
- Dinner at Thamel
- Overnight in Kathmandu

Day 03: A day to remember at Kathmandu

Today your day will start rather early but it will be a day to remember for a long time. You will see the tallest peak in the world, **Mt. Everest** and other Himalayan ranges up close and experience the thrill of a lifetime. Thereafter, you will have a sumptuous English breakfast at the Café and drive to **Dhulikhel** for adventure activities. On your return to Kathmandu, you will visit the **Boudhanath Stupa** for a guided tour and enjoy the evening immersed in Buddhist culture. You will see the sunset from a rooftop café in Boudha under a star-studded sky.

- Early morning Everest flight (6-7 am)
- English Breakfast at Café
- Drive to Dhulikhel for adventure sports (optional zip lining)
- The drive to Boudhanath temple with guided tour
- Sunset and dinner at rooftop café around stupa
- Overnight at Kathmandu

Day 04: Kathmandu-Pokhara

You will reach Pokhara that is famous for its Phewa Lake and **Tal Barahi Temple**. It is also known as the gateway to the Annapurna Circuit, a popular trail in the Himalayas. You will take a short hike to the World Peace Pagoda, drive to the **Gandaki Trout Farm** and enjoy a boat ride in the **Phewa Lake** in Pokhara.

- Breakfast @hotel -Aim to leave by 9 am if road trip to Pokhara OR as per flight time to Pokhara
- Arrive in Pokhara, go to the hotel, welcome drink, freshen up and proceed for sightseeing in Pokhara
- Visit World Peace Pagoda (short hike atop a hill using stairs – approx. 1 hr)
- Drive to Gandaki Trout Farm (beyond Peace Pagoda)
- Drive back to Pokhara for boat ride at Lake Phewa (that includes a visit to the Tal Barahi Temple) and stroll along the lake side Shops and cafes,restaurants and shops – the most-lively part of Pokhara in the evenings
- Dinner at Café by the Lakeside
- Overnight in Pokhara

Day 05: In Pokhara

Begin your day early watching the sunrise at **Sarangkot** that has the best views of the Annapurna range without having to hike. From the viewpoint, you will have uninterrupted panoramic views across a number of the most-striking Himalayan peaks, including the imposing Dhaulagiri (8167 mtrs), the triangle peak of **Machhapuchhare** (Fish Tail), **Annapurna 2** and **Lamjung**. Then return to the hotel for breakfast and leave for adventure activities that Pokhara is most famous for.

- Breakfast @ hotel
- Leave for adventure activities (recommended paragliding OR gyro-copter OR whitewater rafting – approx. 2-3 hours)
- Savor the traditional Nepali Cuisine
- Visit the International Mountain Museum
- Visit Devi's Falls, an underground waterfall and Mahendra Cave, a cave with limestone formations
- Return to the hotel before leaving for dinner at the Restaurant on the Lakeside
- Overnight in Pokhara

Day 06: Pokhara-Kathmandu-Bhatapur-Nagarkot

- Breakfast @hotel -Aim to leave by 9 am if road trip to Kathmandu OR as per flight time to Kathmandu
- Drive to Nagarkot enroute visit Bhaktapur Durbar Square (40 mins drive, spend 30-60 mins in Bhaktapur) – Walk around the Durbar Square, take pictures and buy handicrafts/souvenirs; also known for 'Juju Dhau' (sweet curd)
- Continue to Nagarkot Hill 30 mins from Bhaktapur and have sunset/mountain panorama view from the hotel
- Dinner at hotel
- Overnight at Nagarkot

Day 07: Departure From Kathmandu

- Breakfast @hotel, checkout, leave for Tribhuvan International Airport (45 mins to an hour drive to) OR as per return flight time from Kathmandu

Highlights

- Cultural, historical and UNESCO Heritage sightseeing (7 sights in Kathmandu)
- Mountain Flight to see Mt. Everest up and close
- Cable car ride at Chandragiri Hills resort
- Adventure activities in Dhulikhel
- Experience the exotic Farmer's Market in Kathmandu; Savor Nepali cuisine with a rich cultural program
- Enjoy adventure activities in Pokhara, better known as Nepal's tranquil lakeside town
- Experience sunrise at Sarangkot amidst the 8000 mtr. high snow-capped giant mountains of the Annapurna range, awe-inspiring in their size and stature
- Enjoy spectacular views of the Kathmandu valley from Nagarkot



MUSTANG

THE FORBIDDEN KINGDOM



PLACES TO VISIT



Damodar Kunda is in Upper Mustang area of Nepal at an altitude of 4890m. There is a belief that once in a lifetime if you take a holy bath here takes away from all sins done in a previous and current lifetime. It is the main source of Gandaki River and we can find Shaligram here.

Muktinath is a Vishnu temple, sacred to both Hindus and Buddhists located at the foot of the Thorong La pass in Mustang. It is one of the world's highest temples (altitude 3,800m) and is one of the Chardham.



Lomangthang is the capital of Lo Kingdom/ Upper Mustang famously known as forbidden Kingdom of Nepal and offers its visitors a time travel experience of more than 100 century ago with a blend of culture and beautiful terrain.




Kalopani Guest House is a pioneer of hospitality in the Mustang region, as one of the oldest hotel's established in the region in 1960. This longstanding family business has provided authentic and warm hospitality to generations of trekkers and travelers who pass through this region.



Trithunga Adventure –is led by people who know the mountainous region of Mustang inside-out and has been in hospitality with seven decades of experience and credibility. Four-wheel drive adventure, a new venture, is a sister company of Kalopani Guest House, located in Lete, Kalopani.




Navyush Travel Experiences Pvt. Ltd.

 Mohan Estate, B1/H3,
Mohan Co-Operative Industrial Area,
Mathura Road, Block B,
New Delhi -110044

 +91 8080213696

 Info@navyush.com